



Abusedario

Abusedario anduga raga ima buginguma
meme unatuanaruga, abecedario,
nawinzhemba guakakuaga nekunun
nankamba uguanun nushi.

Ima zhinzhomaru ingui bunginguma gogumga
alfabeto, dzinguaka, kugangui inguindzinaru
asheshishazhinga tun, uguanun nushi
mndzi. Nawi wiwa mkeru, uweningua bgui
ashayama, kua ya variante, nekunka
nashka, inguinguazi bimambaru anzhenguazi
guakura neru iyandzina gawmpana
awakuaga zhiguanun nushi kima ima
zhinzhoma go aunukuga.

Ima shagumanka zhinguiru, ingui cartilla de
transición gogumankanzhe shanaruga
nashka, raga iyangui ima imagen
dugandzinba ugaguiya auwanye shango
awanaruga.

Ime neki ima zhinzhomaru, Laboratorio de
Lengua Dmuna jinshun nushimndzi
goguma awanke ne, nenegangua inkinesha,
aun nanka. Shi zhakundzegakin gogumanka.

Alfabeto D̄m̄una

Alfabeto D̄m̄unamba b̄gui shandzingo awanka, nawigangua bime k̄nzhazhi gogumuwanshka zume goguma awanye shangaw̄ngui nukura. Ima alfabetoru shabun̄ngui nuka nekima nawigangua shangaw̄ngui zhiguazhi gonkura.

Vocales; a, e, i, o, u, ɛ

Alfabeto d̄m̄una; a, b, d, e, g, h, i, j, k, l, m, n, o, p, r, s, t, u, w, y, z.

Ima mowa ɛnk̄so nekandzinaru ima; sh, zh, dz. Ak̄ maigua ɛnk̄so nekaru, tsh.

Ima zhinzhomamba akingui tun m̄nan̄nkua nashka, mawiga masheshish̄nkuashka m̄ntunkua bimandzinakin alfabeto ima zhinzhomamba gaguma awanka.

a



s

g

Abu Saga

b

u

Saga



s

g

a

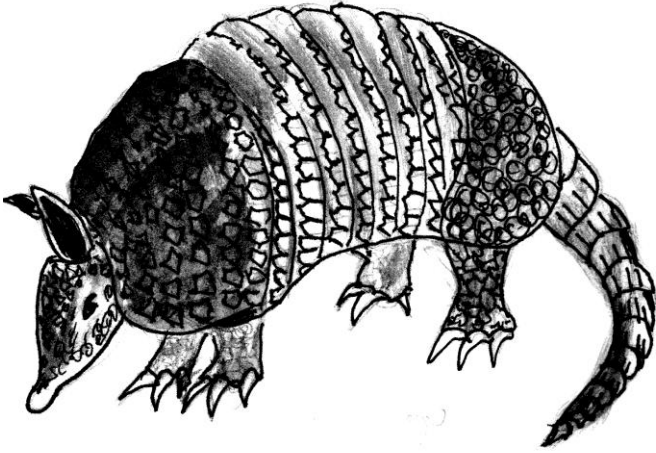
Bu

b



u

Du



u

d

a

g



u

Duga

d

Duadu

a



d

u

Ade



a

e

d

Abu ade duga



a

e

d

u

b

Abu duga



a

u

d

b

Asi

S

a



i

Atu

t



a

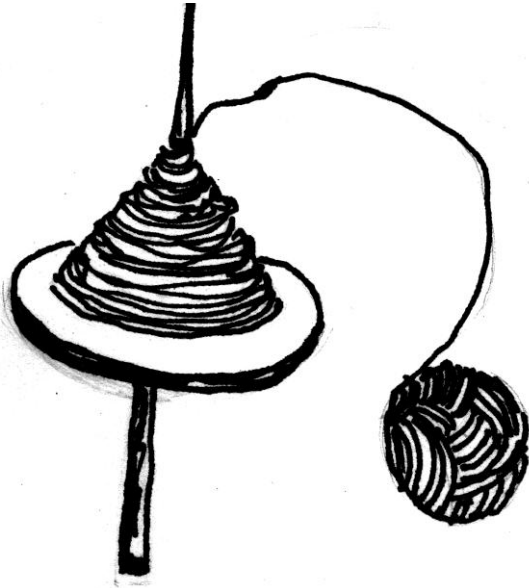
u



Su

S

u

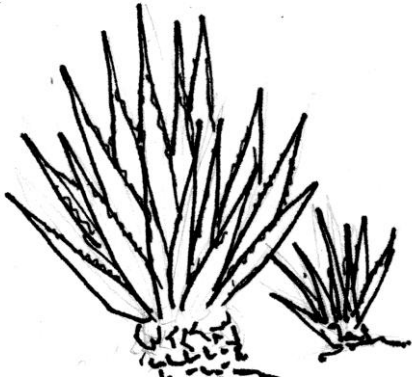


Shi

i

sh

Bi



i

b

Sha shamunku



sh

a

m

n

u

k

Suzu gawi



u

z

a

w

s

i

g

Sanze

s



n

a

z

e

z



Zeku

e

u

k



a

Kada

a

k

d

Te



t

e



Uma

m

u

a

Wima

W

i



a

m

Shima



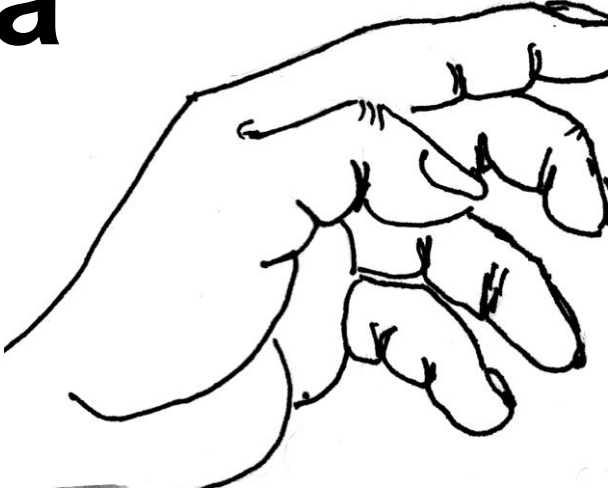
sh

a

i

m

a



Guna

g

n

u

Joma

a

m



o

j



Shoma

m

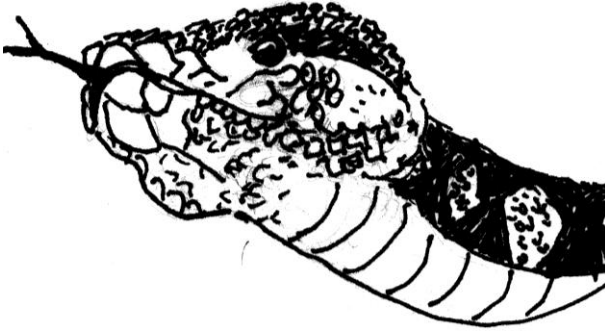
o

sh

a

Guma

m



u

g